

"CONCOURSE QUALITY, HOBBYIST PRICE"



www.martiauto.com  
13238 W Butler Drive  
El Mirage, AZ 85335  
Phone (623) 935-2558  
Fax (623) 935-2579

**DELUXE MARTI REPORT®**



Proud to display this symbol

Copyright Kevin Marti 2026

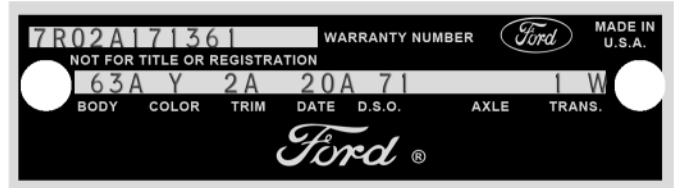
Thank you for your interest in our services. We have determined the following information for your vehicle from the Ford Database we have:

12345678901234567890123456789012345678901234567890123456789012345678901234567890  
7R02A171361 Y 2A 2 20A 71 63A 9AGA LW 1 F2 8 F 2 24 71B018 B

**DOOR DATA PLATE INFORMATION**

Serial Number **7R02A171361**  
 7 1967  
 R Built at San Jose  
 02 Mustang 2-Door Fastback  
 A 289-4V V-8 Engine  
 171361 Serial Number of this Ford scheduled for production at San Jose

63A Mustang 2-Door Fastback  
 Y Dark Moss Green Paint, Ford #2039-A  
 2A Black Vinyl Standard Bucket Seats  
 20A Scheduled for build January 20, 1967  
 71 Los Angeles DSO (District Sales Office)  
 1 3.00 Conventional Rear Axle  
 W C-4 Select Shift Automatic Transmission



**IMPORTANT DATES**

ORDER RECEIVED: 01/09/67  
 CAR SERIALIZED: 01/10/67  
 BUCKED: --  
 SCHEDULED FOR BUILD: 01/20/67  
 ACTUALLY BUILT: 01/16/67  
 RELEASED: 01/16/67  
 SOLD: 02/11/67

ORDER TYPE: STOCK  
 DSO ITEM #: 4161  
 DEALER #: 71B018  
 CHAFFEE MOTORS  
 13900 HAWTHORNE BLVD  
 HAWTHORNE CA 90250

**STATISTICS**

Your vehicle was one of:  
**10,116** With this Paint Code  
**4,376** With these Paint/Trim Codes  
**6,297** With these Engine/Transmission Codes  
**7,517** Ordered from this DSO  
**26,642** With Console  
 For the 1967 Mustang 2-Door Fastback

Your vehicle was equipped with the following features:

- Closed Crankcase Emission System
- Exhaust Emission Control
- F70-14 Wide Oval White Sidewall Nylon Tires
- Console
- Power Steering
- AM Radio
- Tinted Glass
- Deluxe Seat Belts

Your vehicle was actually produced on January 16, 1967 -- four days ahead of schedule.

Kevin Marti